

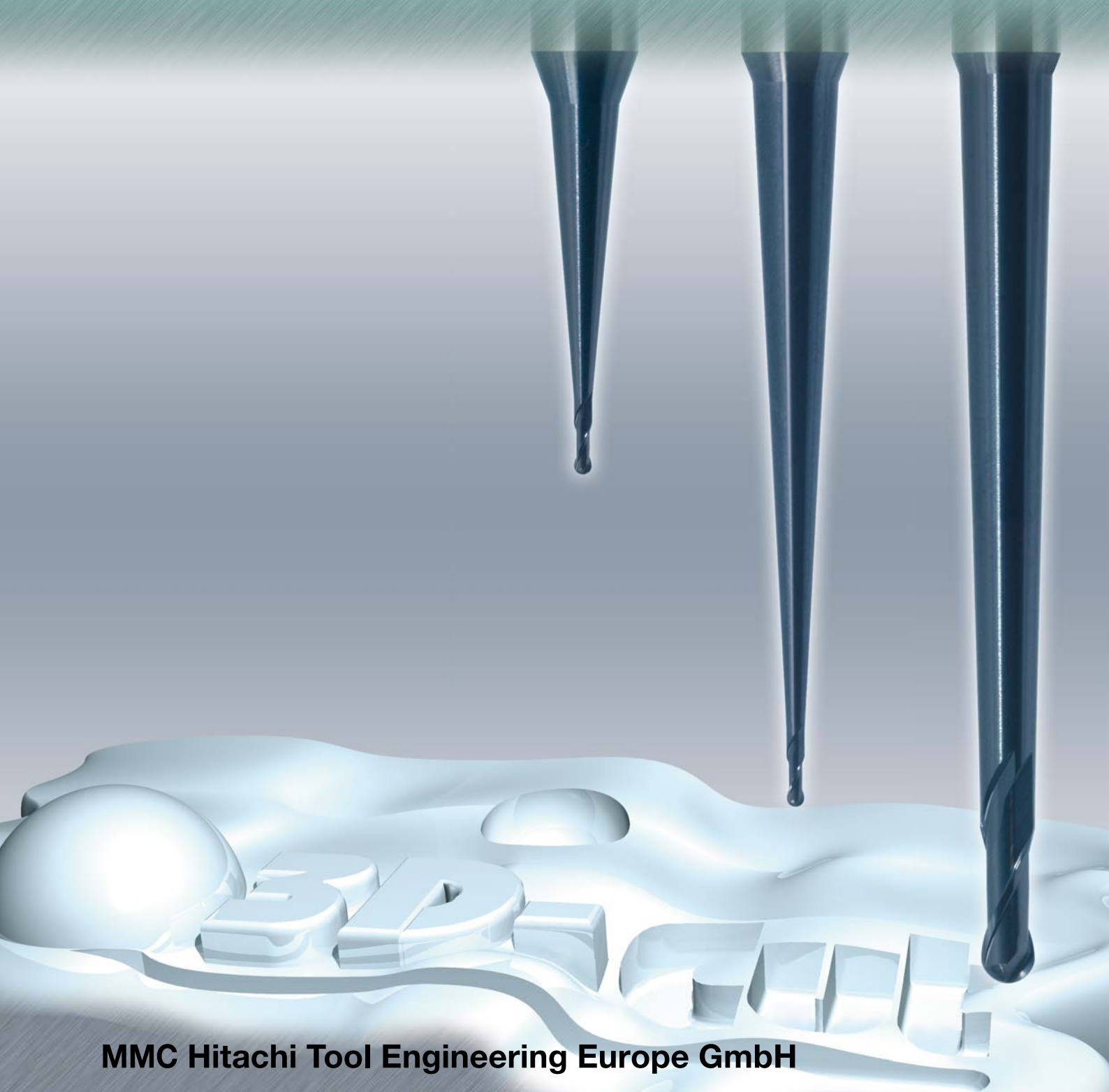
Advanced Engineering

3D-Cut

MMC Hitachi Tool

No. 407.2

EPBPN *Epoch Ball Pencil Neck*
Long Carbide Ball End Mill
R 0.5 mm ~ R 6.0 mm (HSC-HPC-HHC)



MMC Hitachi Tool Engineering Europe GmbH

Micro Grain Carbide – TiAlN Century Coated

EPBPN | Epoch Ball Pencil Neck

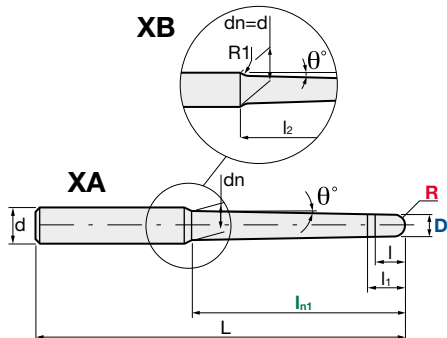
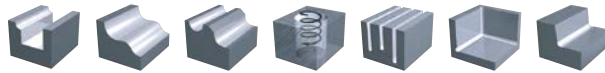
V max
High Speed

▽▽▽
Finishing

HRC
65

▬▬▬
Rib. Miniature

No. of Teeth
2



Carbide
Micro Grain

C
Century Coating

Rake Angle
Positive

Helix Angle	30°
R	± 0.01 mm
D	0/-0.01 mm
d	h6

		Size												
ID Code	Item Code	Z	R	D	θ°	l	dn	l ₁	l _{in1}	L	d	Type		
EP186	EPBPN-2010-15	2	0.5	1	1°30'	2.5	1.8	4	20	60	6	XA		
EP187	EPBPN-2010-30				3°		4.8		40				80	
EP188	EPBPN-2010-50				5°		3.8		20				60	
EP189	EPBPN-2020-15		1	2	1°30'	5	2.7	7	20	80	6	XA		
EP190	EPBPN-2020-30				3°		5.5		40				80	
EP191	EPBPN-2020-50				5°		4.3		20				60	
EP192	EPBPN-2030-15		1.5	3	1°30'	8	5.1	10	50	90	6	XA		
EP193	EPBPN-2030-30				3°		6		30				70	
EP194	EPBPN-2040-15				1°30'		6		48.2				90	
EP195	EPBPN-2040-30		3°	6	29.1	70								
EP196	EPBPN-2050-15		2.5	5	1°30'	10	7.5	12	60	110	8	XA		
EP197	EPBPN-2050-30				3°		10		40.6				90	
EP198	EPBPN-2060-15				1°30'		8		52.2				110	
EP199	EPBPN-2060-30		3°	8	33.1	90								
EP200	EPBPN-2070-15		3.5	7	1°30'	14	9.3	16	60	120	10	XA		
EP201	EPBPN-2070-30				3°		14		9.5				40	100
EP202	EPBPN-2080-15				1°30'		14		54.2				120	
EP203	EPBPN-2080-30		3°	8	35.1	100								
EP204	EPBPN-2100-15		5	10	1°30'	18	12	20	58.2	130	12	XB		
EP205	EPBPN-2100-30				3°		18		39.1				110	
EP206	EPBPN-2120-15				1°30'		22		80				160	
EP207	EPBPN-2120-30		3°	22	63.2	140								

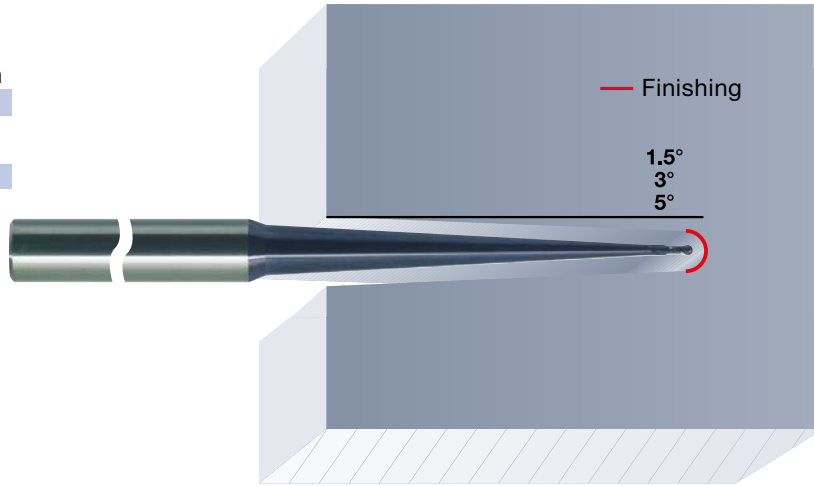
Micro Grain Carbide – TiAlN Century Coated

EPBPN | Epoch Ball Pencil Neck

Application and Tolerance



Item	R	Tolerance		mm
		D	R	
EPBPN	0.5~6	0 / -0.01	+/- 0.01	h6



Always up to date: Please check our P50 QuickFinder



www.mmc-hitachitool-eu.com/quickfinder

Product Range

Solid Carbide End Mills



Indexable Milling Tools



WHNSB Drills



Milling Chucks



Distributed by:

MMC Hitachi Tool Engineering Europe GmbH

Itterpark 12 · 40724 Hilden · Germany · Phone +49 (0) 21 03-24 82-0 · Fax +49 (0) 21 03-24 82-30
E-Mail info@mmc-hitachitool-eu.com · Internet www.mmc-hitachitool-eu.com
© 2015 by MMC Hitachi Tool Engineering Europe GmbH · 2nd Edition · Printed in Germany