

Advanced Engineering

**Epoch21**

Nano-PVD Coating  
**TH45+**

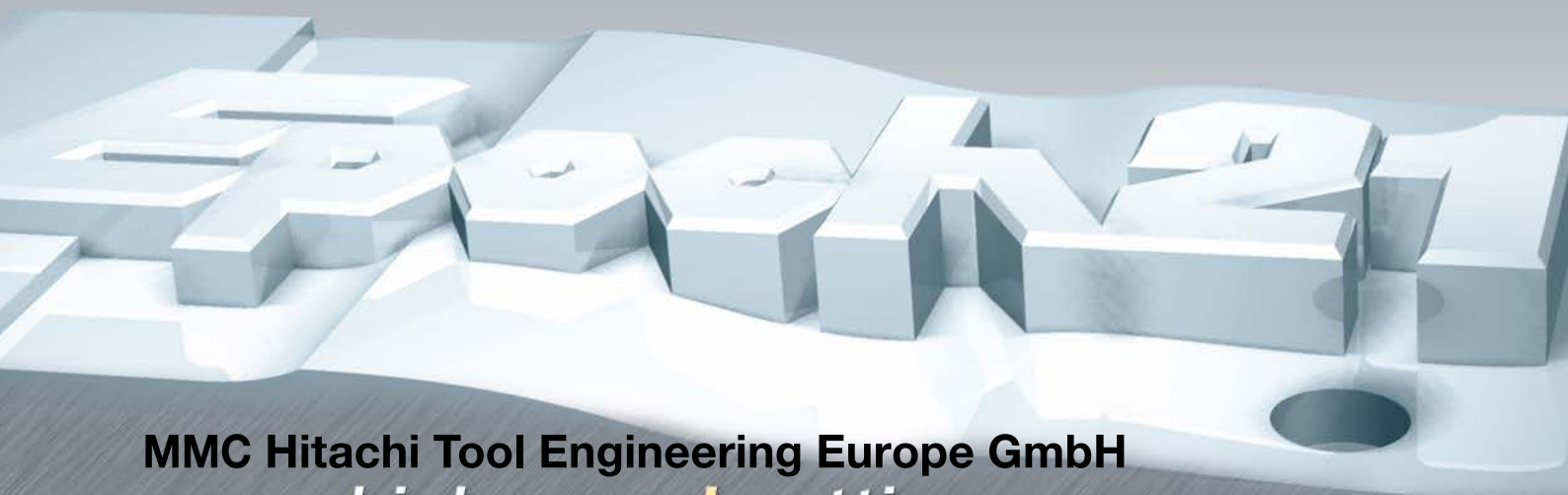
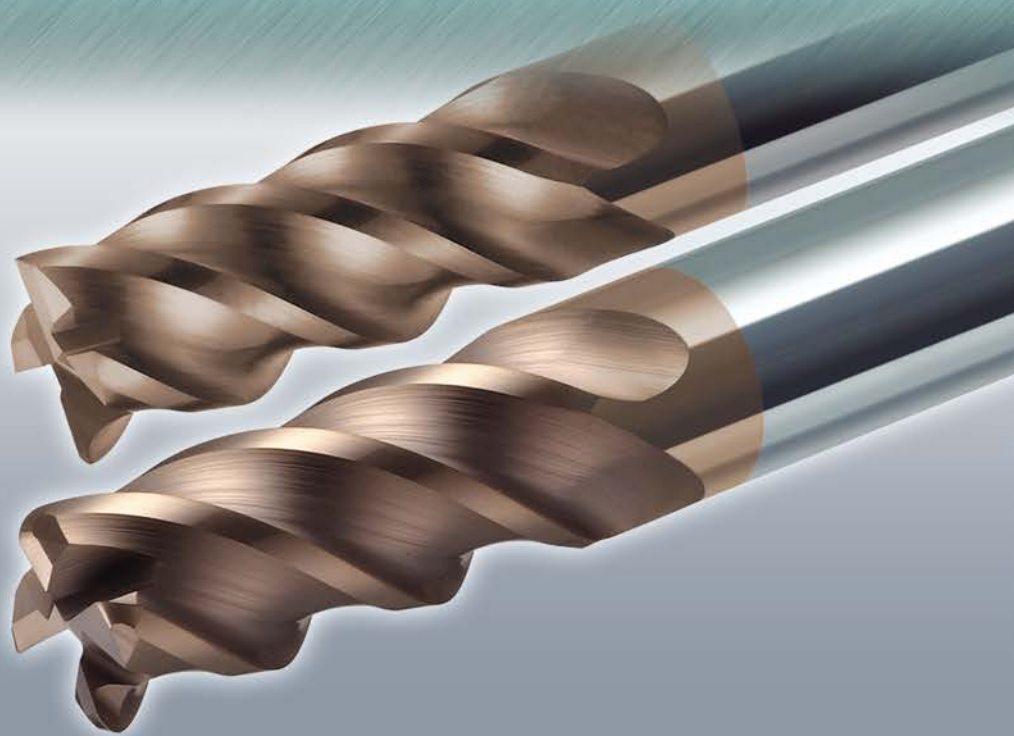
MMC Hitachi Tool

No. 422

# *EPP-TH Epoch TH Power Mill*

*Micro Grain Solid Carbide End Mill*

*Epoch TH Series for high hardened steels*



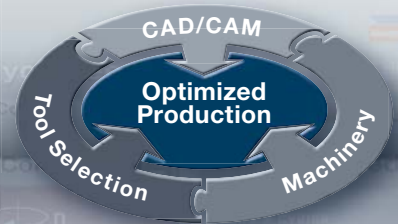
MMC Hitachi Tool Engineering Europe GmbH  
[www.high-speed-cutting.com](http://www.high-speed-cutting.com)

Micro Grain Solid Carbide End Mill

Quickly find the tools you need for best performance in machining

**P50QF PRODUCTION50<sup>®</sup> QuickFinder**

www.production50.com



**P50QF | Production50 QuickFinder**  
The Quickly-Finding Software for Tools and Tool Accessories

- Real-time search with catalogue browser
- Cutting conditions calculation with project planning
- Shop system
- Online update

**Die Software zum schnellen Finden von Werkzeugen und Zubehör**

- Suche in Echtzeit mit Katalog-Browser
- Schnittwerte-Berechnung mit Projektierung
- Bestellsystem
- Online-Update
- Komplett in Deutsch & English

**Function Buttons**  
Funktions-Schaltflächen

**QuickFinder Help:**  
Details of tools etc.  
**QuickFinder Hilfe:**  
Werkzeugdetails usw.

**Filtering by contour shape**  
Gefiltert nach Bearbeitungs-Kontur

**Additional search parameters**  
Zusätzliche Parameter-Suche

ID code	Item code	Z	ØR	CR	ln	s	l	Ødn	L	ØD	Grade	Inserts1	Inserts2	Inserts3
EP907	ETMP-4040-40-10	4	4	1	40	1	6		90	8				
EP370	ETMP-4050-12	4	5	1.2	15		10		70	6				
EP598	ETMP-4050-30-12	4	5	1.2	30	1	7.5		90	6				
EP599	ETMP-4050-40-12	4	5	1.2	40	1	7.5		100	8				
EP600	ETMP-4050-50-12	4	5	1.2	50	1	7.5		110	8				
EP371	ETM-4050-15	4	6	1.5			12		90	6				
EP379	ETMLN-4050-30-15	4	6	1.5	30		9	5.7	75	6				
EP380	ETMLN-4050-42-15	4	6	1.5	42		9	5.7	90	6				
EP381	ETMLN-4050-54-15	4	6	1.5	54		9	5.7	100	8				
EP601	ETMP-4050-40-15	4	9	1.5	40	1	9		100	8				
EP602	ETMP-4050-55-15	4	6	1.5	55	1	9		110	8				
EP603	ETMP-4050-67-15	4	6	1.5	67	1	9		125	8				
EP372	ETM-4030-20	4	8	2			16		100	8				
EP282	ETMLN-4080-40-20	4	8	2	40		12	7.6	95	8				
EP383	ETMLN-4080-58-20	4	8	2	58		12	7.6	100	8				
EP384	ETMLN-4080-72-20	4	8	2	72		12	7.6	120	8				
EP373	ETM-4100-20	4	10	2			20		110	10				

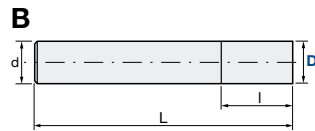
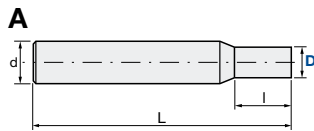
**Selected product**  
Ausgewähltes Produkt

Download: [www.mmc-hitachitool-eu.com/quickfinder](http://www.mmc-hitachitool-eu.com/quickfinder)

**Micro Grain Solid Carbide End Mill**

**EPP-TH | Epoch TH Power Mill**

**Q max**  
High Efficient
**▽**  
Roughing
**▽▽**  
Semi-Finishing
**▽▽▽**  
Finishing
**HRC**  
70
**No. of Teeth**  
4



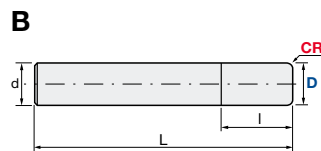
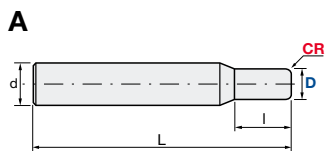
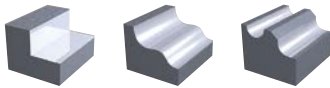
**Carbide**  
Micro Grain
**TH45+**  
Nano-PVD Coating



D 3 – 6	0 / -0.015
D 8 – 12	0 / -0.02
d	h6

ID Code	Item Code	Z	D	l	L	d	Type
EP001	<b>EPP-4030-TH</b>	4	3	8	60	6	A
EP002	<b>EPP-4040-TH</b>		4	11			
EP266	<b>EPP-4050-TH</b>		5	13			
EP564	<b>EPP-4060-TH</b>		6	13	75	8	B
EP581	<b>EPP-4080-TH</b>		8	19			
EP656	<b>EPP-4100-TH</b>		10	22			
EP657	<b>EPP-4120-TH</b>	12	26	100	12		

**Q max**  
High Efficient
**▽**  
Roughing
**▽▽**  
Semi-Finishing
**▽▽▽**  
Finishing
**HRC**  
70
**No. of Teeth**  
4



**Carbide**  
Micro Grain
**TH45+**  
Nano-PVD Coating



CR	± 0.015
D 3 – 6	0 / -0.015
D 8 – 12	0 / -0.02
d	h6

ID Code	Item Code	Z	D	CR	l	L	d	Type		
EP658	<b>EPP-4030-02-TH</b>	4	3	0.2	8	60	6	A		
EP659	<b>EPP-4030-05-TH</b>			0.5						
EP660	<b>EPP-4040-02-TH</b>			0.2						
EP661	<b>EPP-4040-05-TH</b>		0.5	11						
EP662	<b>EPP-4050-02-TH</b>		0.2							
EP663	<b>EPP-4050-05-TH</b>		0.5							
EP664	<b>EPP-4060-03-TH</b>		6	0.3	13	75	8	B		
EP665	<b>EPP-4060-05-TH</b>			0.5						
EP666	<b>EPP-4060-10-TH</b>			1.0						
EP667	<b>EPP-4080-03-TH</b>		8	0.3	19				80	10
EP668	<b>EPP-4080-05-TH</b>			0.5						
EP669	<b>EPP-4080-10-TH</b>			1.0						
EP670	<b>EPP-4100-05-TH</b>	10	0.5	22	100	12				
EP671	<b>EPP-4100-10-TH</b>		1.0							
EP672	<b>EPP-4100-20-TH</b>		2.0							
EP673	<b>EPP-4120-05-TH</b>	12	0.5	26						
EP674	<b>EPP-4120-10-TH</b>		1.0							
EP675	<b>EPP-4120-20-TH</b>		2.0							

Always up to date: Please check our P50 QuickFinder



**Product Range**

Solid Carbide End Mills



Indexable Milling Tools



WHNSB Drills



Milling Chucks



Distributed by:

**MMC Hitachi Tool Engineering Europe GmbH**

Itterpark 12 · 40724 Hilden · Germany · Phone +49 (0) 21 03-24 82-0 · Fax +49 (0) 21 03-24 82-30  
E-Mail info@mmc-hitachitool-eu.com · Internet www.mmc-hitachitool-eu.com  
© 2015 by MMC Hitachi Tool Engineering Europe GmbH · Printed in Germany