

Advanced Engineering

Epoch21

Nano-PVD Coating
TH45+

MMC Hitachi Tool

No. 425

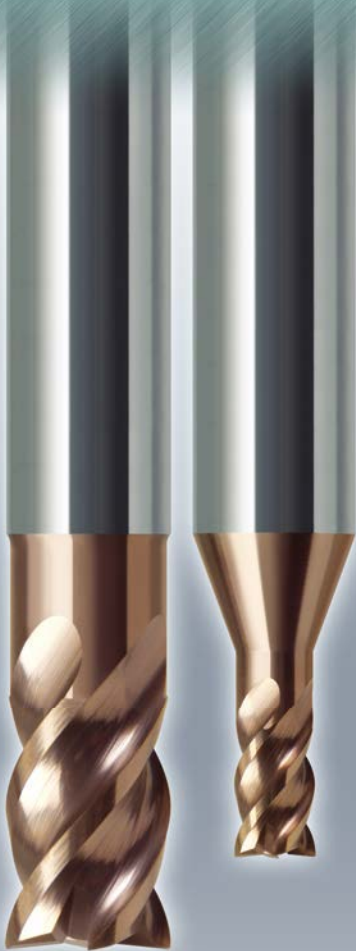
EPPP-TH

Epoch TH Power Mill

Precision Plus

Micro Grain Solid Carbide End Mill

Epoch TH Series for high hardened steels



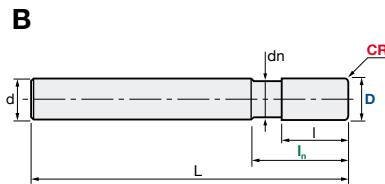
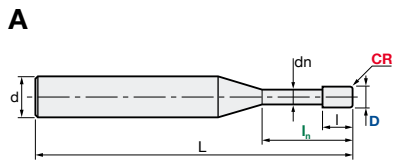
D 1-3	CR 0.05
D 4-6	CR 0.1
CR Tolerance	± 0.005
d	h4

MMC Hitachi Tool Engineering Europe GmbH
www.high-speed-cutting.com

Micro Grain Solid Carbide End Mill

EPPP-TH | Epoch Power Mill Precision

Q max High Efficient	▽ Roughing	▽▽ Semi-Finishing	▽▽▽ Finishing	HRC 70	No. of Teeth 4
--------------------------------	----------------------	-----------------------------	-------------------------	------------------	--------------------------



Carbide Micro Grain	TH45+ Nano-PVD Coating	Rake Angle Neutral
-------------------------------	----------------------------------	------------------------------



D	0 / -0.01 mm
CR	± 0.005 mm
d	h4

ID Code	Item Code	Z	D	CR	In	l	dn	L	d	Type
EP761	EPPP-4010-005-TH	4	1	0.05	2.5	1.5	0.95	50	6	A
EP762	EPPP-4015-005-TH		1.5		3.8	2.3	1.43			
EP763	EPPP-4020-005-TH		2		5.0	3.0	1.90			
EP764	EPPP-4025-005-TH		2.5	6.3	3.8	2.38				
EP765	EPPP-4030-005-TH		3	7.5	4.5	2.85				
EP766	EPPP-4040-01-TH		4	10.0	6.0	3.80				
EP767	EPPP-4050-01-TH	5	12.5	7.5	4.75	B				
EP768	EPPP-4060-01-TH	6	15.0	9.0	5.70					

EPPP-TH | Special Core Geometry

Larger Core diameter than conventional end mill:

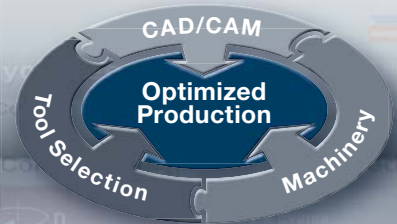
Conventional	Comparison	EPPP: Core diameter 68% of D
<p>60% D</p>	<p>100% D</p>	<p>68% D</p>
<p>High deflection rate</p>	<p>Comparison of surface deflection</p>	<p>Low deflection rate:</p> <ul style="list-style-type: none"> + Higher surface quality + More tool life + Closer CR tolerance <p>= EPPP-TH</p>

Micro Grain Solid Carbide End Mill

Quickly find the tools you need for best performance in machining

P50QF PRODUCTION50[®] QuickFinder

www.production50.com



P50QF | Production50 QuickFinder The Quickly-Finding Software for Tools and Tool Accessories

- Real-time search with catalogue browser
- Cutting conditions calculation with project planning
- Shop system
- Online update

Die Software zum schnellen Finden von Werkzeugen und Zubehör

- Suche in Echtzeit mit Katalog-Browser
- Schnittwerte-Berechnung mit Projektierung
- Bestellsystem
- Online-Update
- Komplett in Deutsch & English

Function Buttons
Funktions-Schaltflächen

QuickFinder Help:
Details of tools etc.
QuickFinder Hilfe:
Werkzeugdetails usw.

Filtering by contour shape
Gefiltert nach Bearbeitungs-Kontur

Additional search parameters
Zusätzliche Parameter-Suche

ID code	Item code	Z	ØR	CR	ln	s	l	Ødn	L	ØD	Grade	Inserts1	Inserts2	Inserts3
EP907	ETMP-4040-40-10	4	4	1	40	1	6		90	8				
EP370	ETMP-4050-12	4	5	1.2	15		10		70	6				
EP598	ETMP-4050-30-12	4	5	1.2	30	1	7.5		90	6				
EP599	ETMP-4050-40-12	4	5	1.2	40	1	7.5		100	8				
EP600	ETMP-4050-50-12	4	5	1.2	50	1	7.5		110	8				
EP371	ETM-4050-15	4	6	1.5			12		90	6				
EP379	ETMLN-4050-30-15	4	6	1.5	30		9	5.7	75	6				
EP380	ETMLN-4050-42-15	4	6	1.5	42		9	5.7	90	6				
EP381	ETMLN-4050-54-15	4	6	1.5	54		9	5.7	100	8				
EP601	ETMP-4050-40-15	4	9	1.5	40	1	9		100	8				
EP602	ETMP-4050-55-15	4	6	1.5	55	1	9		110	8				
EP603	ETMP-4050-67-15	4	6	1.5	67	1	9		125	8				
EP372	ETM-4030-20	4	8	2			16		100	8				
EP282	ETMLN-4080-40-20	4	8	2	40		12	7.6	95	8				
EP383	ETMLN-4080-58-20	4	8	2	58		12	7.6	100	8				
EP384	ETMLN-4080-72-20	4	8	2	72		12	7.6	120	8				
EP373	ETM-4100-20	4	10	2			20		110	10				

Selected product
Ausgewähltes Produkt

Download: www.mmc-hitachitool-eu.com/quickfinder

Always up to date: Please check our P50 QuickFinder



Product Range

Solid Carbide End Mills



Indexable Milling Tools



WHNSB Drills



Milling Chucks



Distributed by:



MMC Hitachi Tool Engineering Europe GmbH

Itterpark 12 · 40724 Hilden · Germany · Phone +49 (0) 21 03-24 82-0 · Fax +49 (0) 21 03-24 82-30
 E-Mail info@mmc-hitachitool-eu.com · Internet www.mmc-hitachitool-eu.com
 © 2015 by MMC Hitachi Tool Engineering Europe GmbH · Printed in Germany