

Advanced Engineering

Epoch21

PN Coating

MMC Hitachi Tool

No. 444.2

EPISM-CR-W-PN Epoch Multi Series

Corner Radius Type
Micro Grain Solid Carbide End Mill



Suitable for:

- Soft to hard materials
- Roughing to Finishing
- 2D ~ 3D applications:
 - Side milling
 - Slotting
 - Z constant

MMC Hitachi Tool Engineering Europe GmbH
www.high-speed-cutting.com

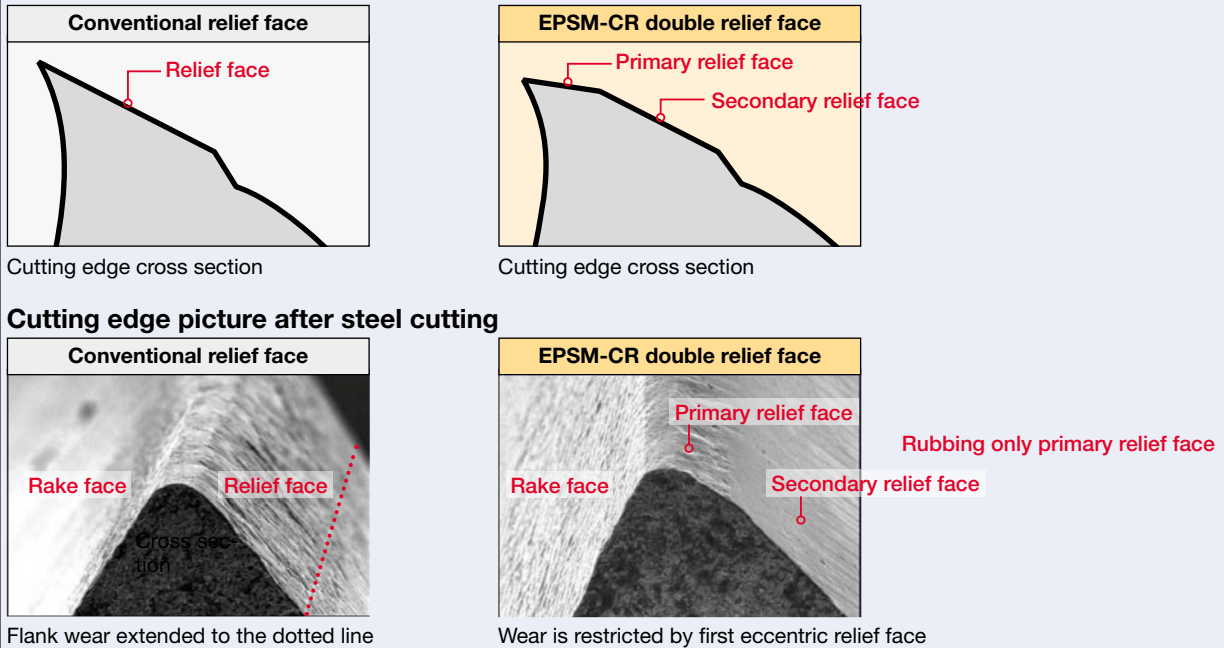
Micro Grain Solid Carbide End Mill

EPISM-CR-W-PN | Epoch Multi Series Corner Radius

Double Gash achieves perfect balance with rigidity and chip evacuation. It guarantees high performance in vertical and horizontal milling.



Double relief face avoids chipping even in aggressive cutting parameter
Strengthens cutting edge and avoids excessive contact between cutter and workpiece.
For higher efficiency and longer tool life



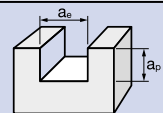
Optimized unequal pitch: Dramatically suppressing vibration by irregular frequency

For longer tool life and better surface quality, especially in thin wall machining

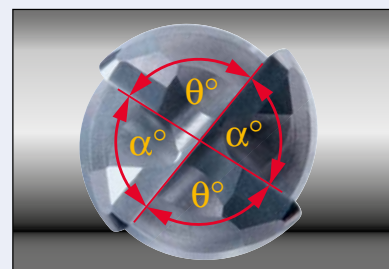
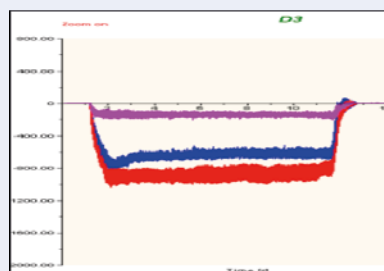
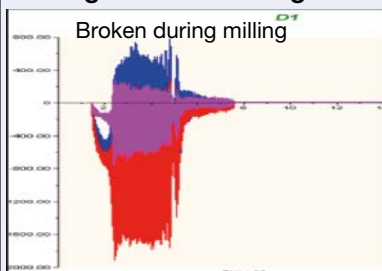
Testing tool size: D = 8mm, Workpiece material: 1.4301

n = 2,100 min⁻¹, Feed rate V_f = 230mm/min, a_p = 6.4 mm, a_e = 8 mm, Machine: Makino V33 (HSK63A)

OH = 24 mm, Coolant: Wet, Work size: 100 × 50 × 50 mm



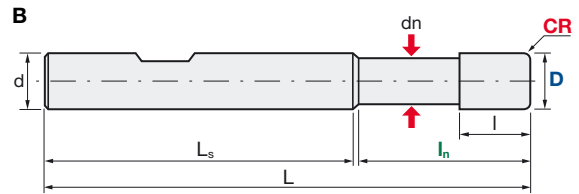
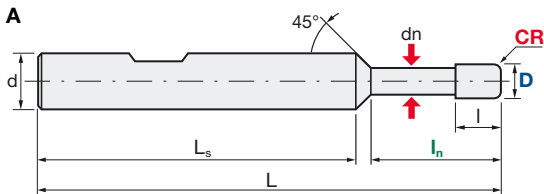
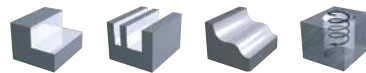
Cutting force in slotting



Micro Grain Solid Carbide End Mill

EPMS-CR-W-PN | Epoch Multi Series Corner Radius

V max High Speed	Q max High Efficient	▽ Roughing	▽▽ Semi Finishing	▽▽▽ Finishing	HRC 55	No. of Teeth 4
----------------------------	--------------------------------	----------------------	-----------------------------	-------------------------	------------------	--------------------------



Carbide Micro Grain	PN PaNacea Coating	Rake Angle Positive
-------------------------------	------------------------------	-------------------------------

D	(D1-D6) (D8-D20)	0 / -0.015 mm 0 / -0.020 mm
CR	(D1-D2) (D3-D20)	+/-0.005 mm +/-0.010 mm
d	(D1-16) (D16-20)	h5 h6
Helix angle	40°	

EPMS-4000-OO-RO.O-W-PN (3D underneck)													
ID Code	Item Code (M-type)	Z	D	CR	ln	l	dn	L	Ls	d	Type		
EP1563	EPMS-4010-3-R0.1-W-PN	4	1	0.1	3	2.2	0.96	56	41.24	6	A		
EP1566	EPMS-4020-6-R0.2-W-PN		2	0.2	6	4.4	1.92		40.59				
EP1568	EPMS-4030-9-R0.2-W-PN		3	0.2	9	6.6	2.88		39.94				
EP1569	EPMS-4040-12-R0.5-W-PN		4	0.5	12	8.8	3.7		39.30				
EP1571	EPMS-4050-15-R0.5-W-PN		5	0.5	15	11.0	4.6		38.65				
EP1573	EPMS-4060-18-R0.5-W-PN		6	1.0	18	13.2	5.5		38.00				
EP1574	EPMS-4060-18-R1.0-W-PN			1.5	18				38.00				
EP1575	EPMS-4060-18-R1.5-W-PN			0.5	18				38.00				
EP1577	EPMS-4080-24-R0.5-W-PN		8	1.0	24	17.6	7.3		39.00				
EP1578	EPMS-4080-24-R1.0-W-PN			2.0	24				39.00				
EP1579	EPMS-4080-24-R2.0-W-PN			0.5	24			39.00					
EP1581	EPMS-4100-30-R0.5-W-PN			10	1.0			30	22.0	9.1	74	44.00	10
EP1582	EPMS-4100-30-R1.0-W-PN		1.0	30	44.00								
EP1583	EPMS-4100-30-R2.0-W-PN		2.0	30	44.00								
EP1585	EPMS-4120-36-R0.5-W-PN		12	0.5	36	26.4	11	86	50.00				
EP1586	EPMS-4120-36-R1.0-W-PN			1.0	36			50.00					
EP1587	EPMS-4120-36-R2.0-W-PN			2.0	36			50.00					
EP1589	EPMS-4160-48-R1.0-W-PN		16	1.0	48	35.2	14.5	110	62.00	16			
EP1590	EPMS-4160-48-R3.0-W-PN			3.0	48			62.00					
EP1593	EPMS-4200-60-R1.0-W-PN		20	1.0	60	44.0	18.2	125	65.00	20			
EP1594	EPMS-4200-60-R3.0-W-PN	3.0		60	65.00								

EPMS-4000-OO-RO.O-W-PN (5D underneck)													
ID Code	Item Code (M-type)	Z	D	CR	ln	l	dn	L	Ls	d	Type		
EP1564	EPMS-4010-5-R0.1-W-PN	4	1	0.1	5	2.2	0.96	56	39.24	6	A		
EP1565	EPMS-4020-10-R0.2-W-PN		2	0.2	10	4.4	1.92		36.59				
EP1567	EPMS-4030-15-R0.2-W-PN		3	0.2	15	6.6	2.88		33.94				
EP1570	EPMS-4040-20-R0.5-W-PN		4	0.5	20	8.8	3.7		63			38.30	
EP1572	EPMS-4050-25-R0.5-W-PN		5	0.5	25	11.0	4.6	68	40.65				
EP1576	EPMS-4060-30-R0.5-W-PN		6	1.0	30	13.2	5.5	80	38.00				
EP1580	EPMS-4080-40-R0.5-W-PN		8	1.0	40	17.6	7.3	80	40.00			8	B
EP1584	EPMS-4100-50-R1.0-W-PN		10	1.0	50	22.0	9.1	94	44.00				
EP1588	EPMS-4120-60-R1.0-W-PN		12	1.0	60	26.4	11	110	50.00				
EP1591	EPMS-4160-80-R1.0-W-PN		16	1.0	80	35.2	14.5	135	55.00				
EP1592	EPMS-4200-100-R1.0-W-PN		20	1.0	100	44.0	18.2	155	55.00				

Always up to date: Please check our P50 QuickFinder



Product Range

Solid Carbide End Mills



Indexable Milling Tools



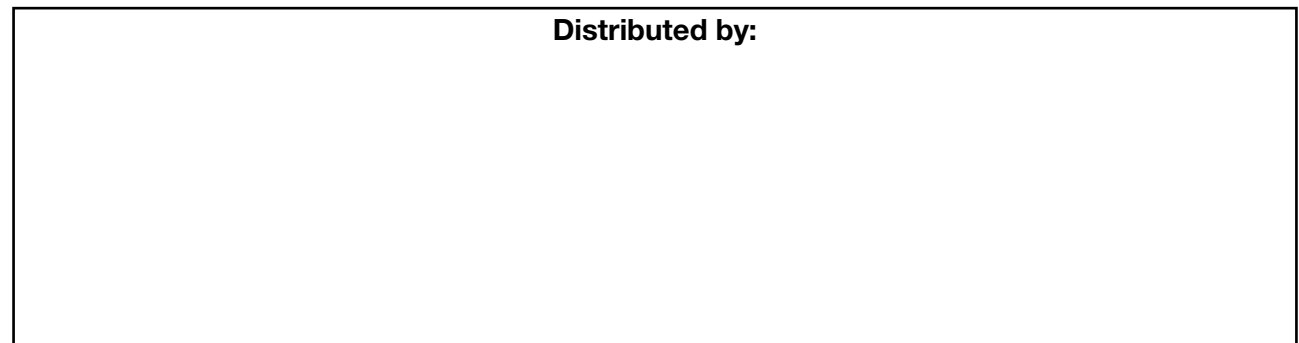
WHNSB Drills



Milling Chucks



Distributed by:



MMC Hitachi Tool Engineering Europe GmbH

Itterpark 12 · 40724 Hilden · Germany · Phone +49 (0) 21 03-24 82-0 · Fax +49 (0) 21 03-24 82-30
 E-Mail info@mmc-hitachitool-eu.com · Internet www.mmc-hitachitool-eu.com
 © 2015 by MMC Hitachi Tool Engineering Europe GmbH · 2nd Edition · Printed in Germany