

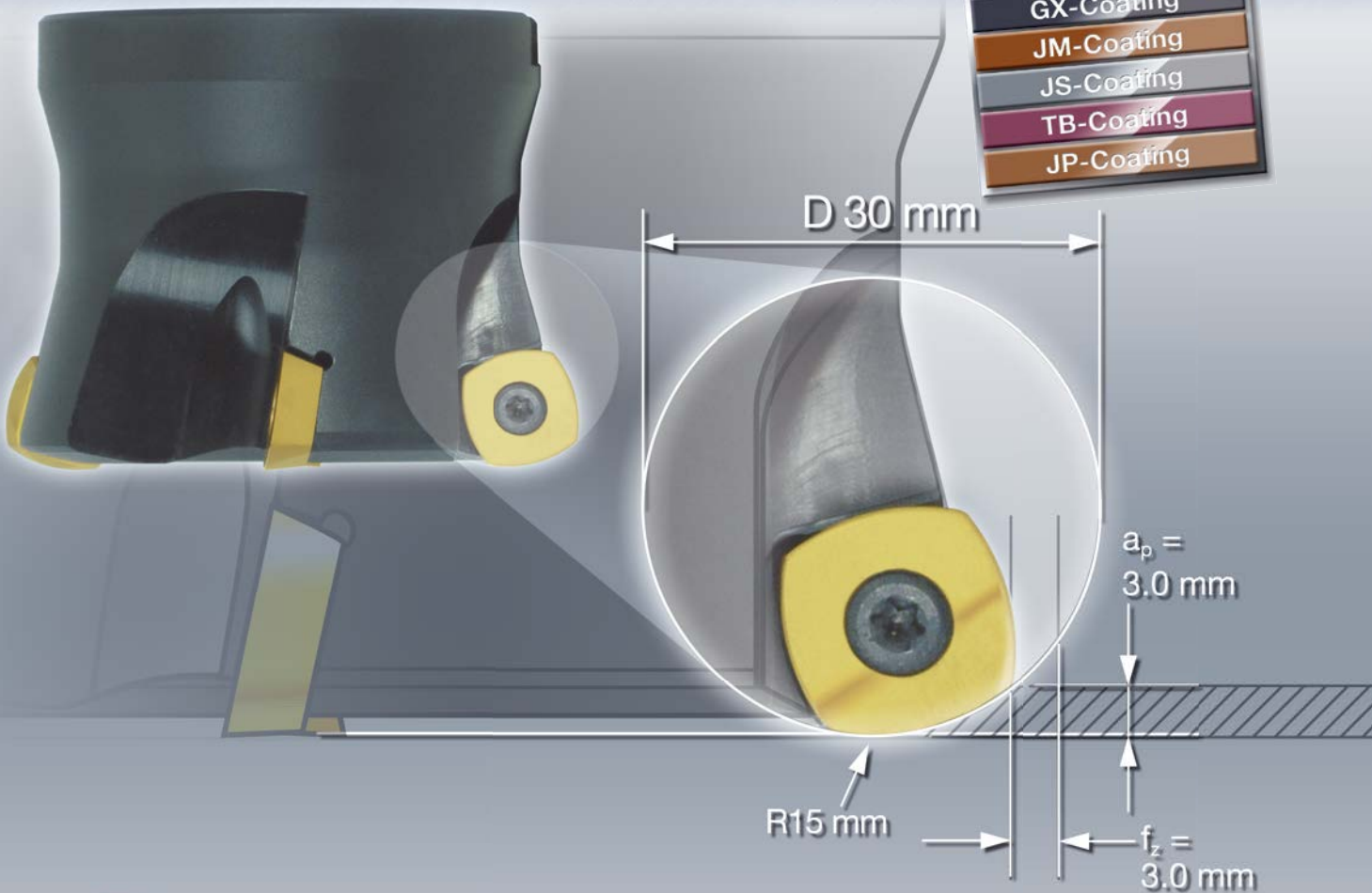
ASF Turbo Face

A New Generation Face Mill

Metal Removal Rate $1,000 \text{ cm}^3 \sim 2,000 \text{ cm}^3/\text{min}$

Available Coatings:

CH-Coating
GX-Coating
JM-Coating
JS-Coating
TB-Coating
JP-Coating



Indexable Milling Tools

ASF | Turbo Face

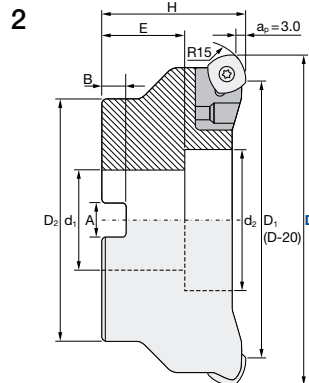
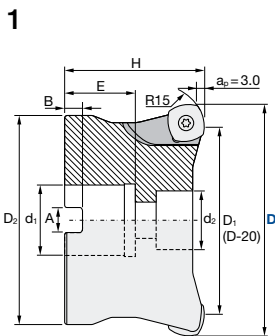
Q max
High Efficient

▽
Roughing

▽▽▽
Finishing

HRC
60

No. of Teeth
4 ~ 14



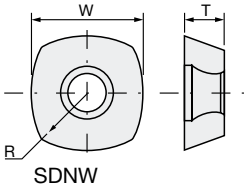
Tolerance D 0/-0.2

ID Code	Item Code	Stock	Z	D	D ₁	H	E	A	B	d ₁	d ₂	D ₂	Shape	Inserts
FH498	ASF-5063RM	■	4	63	43	50	20	10.4	6.3	22	17	60	1	SDNW1505 ZDTN-R15
FH499	ASF-5080RM	■		80	60		22	12.4	7	27	20	70		
FH500	ASF-5100RM	■	5	100	80		25.5	14.4	8	32	26	90	2	SDMT1505 ZDTN-C15
FH501	ASF-5125RM	■	6	125	105		30	16.4	9.5	40	32	100		
FH502	ASF-5160RM	■	8	160	140						69	105		
FH503	ASF-5200RM	■	10	200	180					105	150			
FH504	ASF-5250RM	■	12	250	230		32	25.7	14	60	140	200		
FH505	ASF-5315RM	□	14	315	295						220	265		

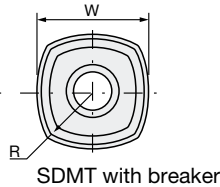
■ = Stock | Germany | □ = Please ask for delivery time

INSERTS

Type A



Type B



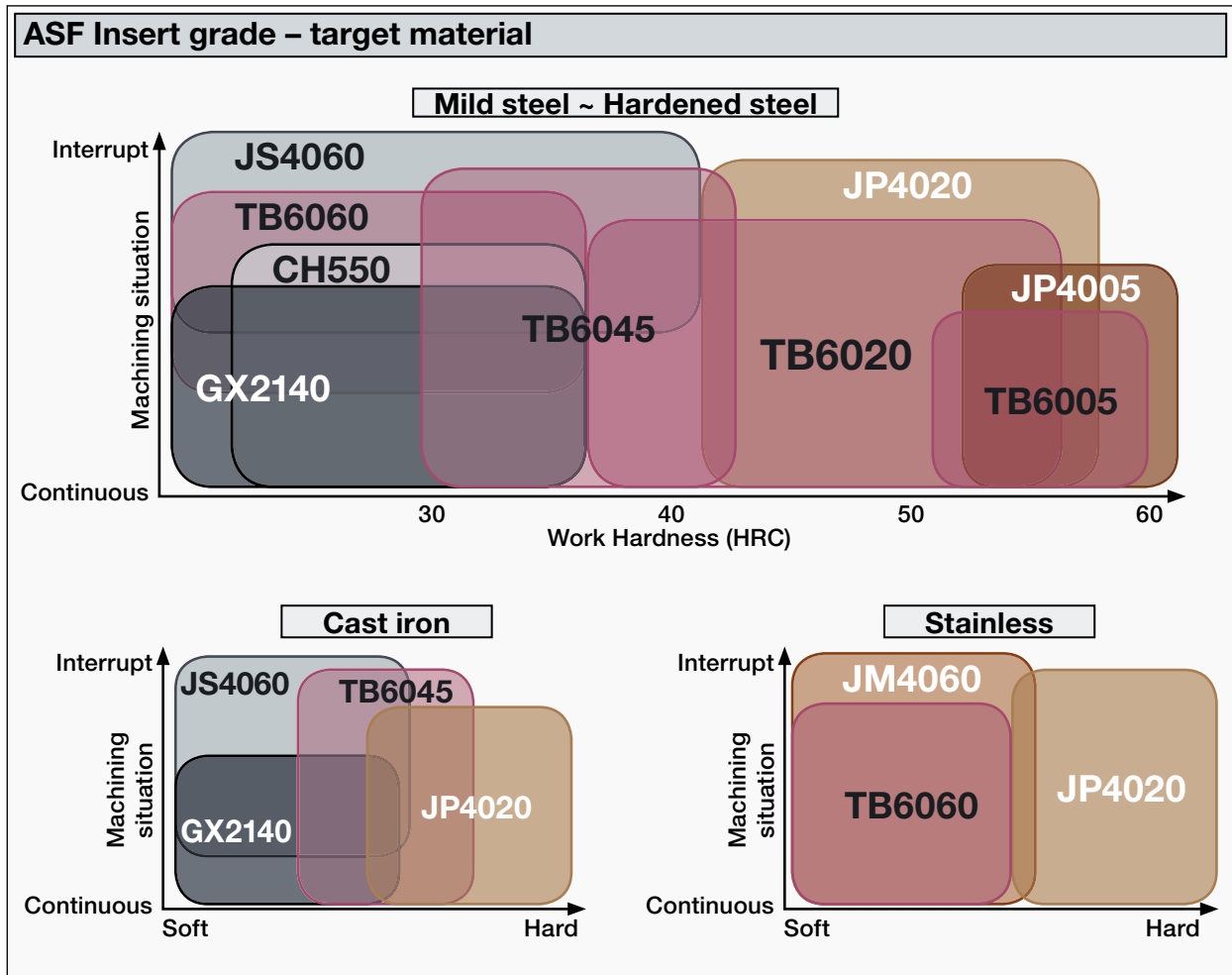
Inserts	Grade									Size (mm)			Chip-breaker	Type	
	CH550	GX2140	JM4060	JS4060	TB6060	TB6045	TB6020	JP4020	TB6005	JP4005	R	T			W
Item code	ID-Code														
SDNW-1505ZDTN-R15		WF241		WF338	WF625	WF624	WF644	WF337	WF639	WF336	15	5.56	15.875	no	A
SDMT-1505ZDTN-R15	WF640	WF240	WF341	WF340				WF339						yes	B

CH550	Cermet
GX2140	CVD · For heavy roughing of mild steels Recommended for dry cutting
JM4060	PVD · For stainless steels and carbon steel
JS4060	PVD · Thick layer for soft materials
TB 6060 - 6005	PVD · Hybrid Coating
JP4020	PVD · For pre-hardened steels 40–55 HRC
JP4005	PVD · For hardened steels > 50 HRC

Parts					
Clamp Screw	Locator	Locator Screw	Wedge Screw	Wedge	Wrench
ID-/ Item-Code	ID-/ Item-Code	ID-/ Item-Code	ID-/ Item-Code	ID-/ Item-Code	ID-/ Item-Code
ET162 / 555-141	ET170 / 351-111	ET171 / 156-161	ET6 / 100-143	ET172 / 176-121	ET14 / 105-T20

Indexable Milling Tools

ASF | Turbo Face



Always up to date: Please check our P50 QuickFinder



Product Range

Solid Carbide End Mills



Indexable Milling Tools



WHNSB Drills



Milling Chucks



Distributed by:



MMC Hitachi Tool Engineering Europe GmbH

Itterpark 12 · 40724 Hilden · Germany · Phone +49 (0) 21 03-24 82-0 · Fax +49 (0) 21 03-24 82-30
 E-Mail info@mmc-hitachitool-eu.com · Internet www.mmc-hitachitool-eu.com
 © 2015 by MMC Hitachi Tool Engineering Europe GmbH · 3rd Edition · Printed in Germany