

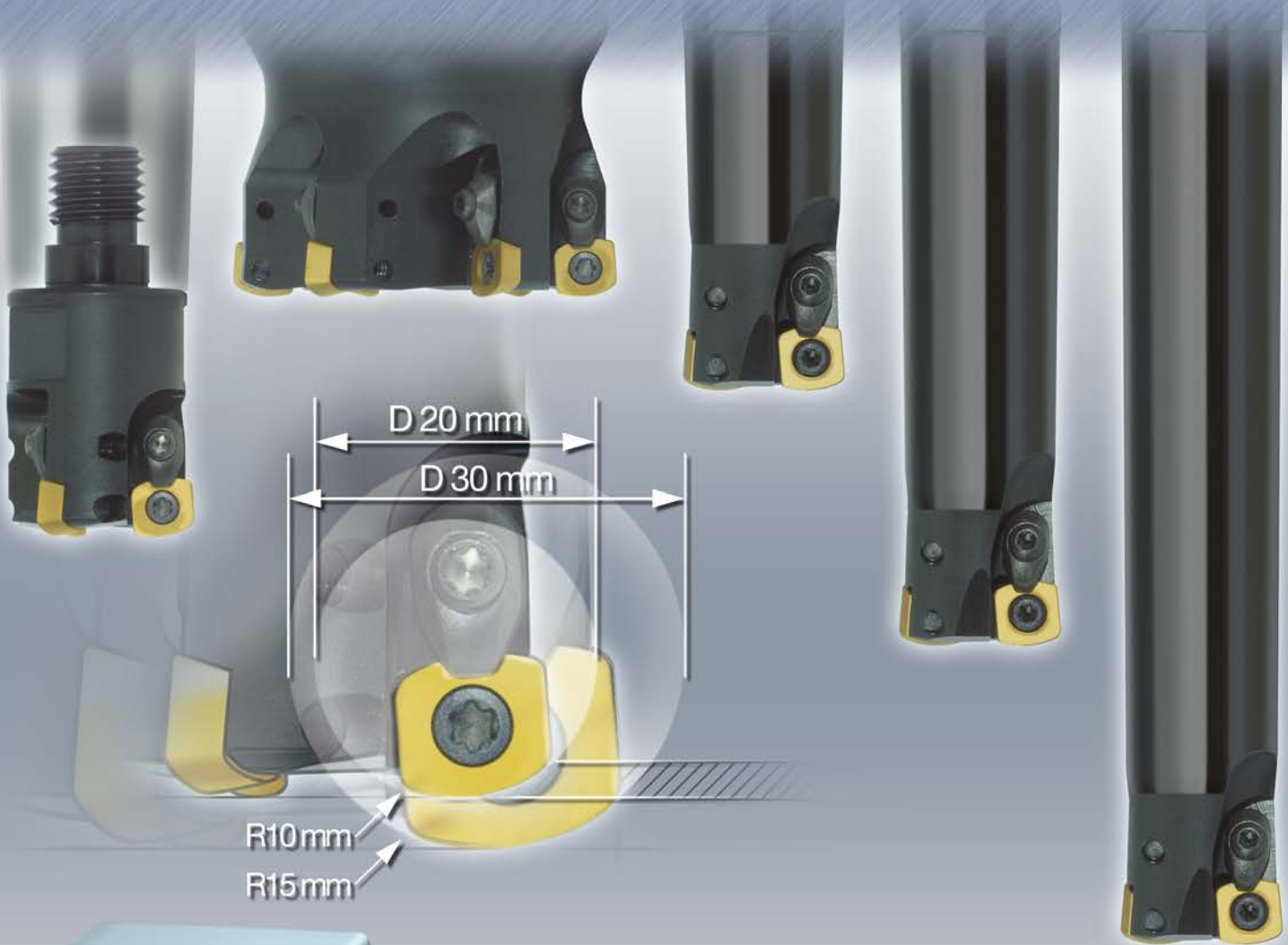
Advanced Engineering

Indexable
Milling

MMC Hitachi Tool

No. 317.2

ASR Turbo Metric Series - Maximum Volume & High Feed Cutting (HFC)



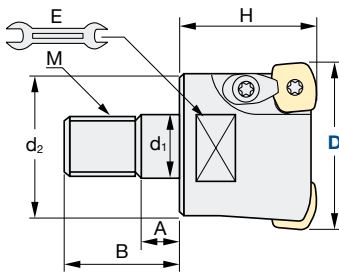
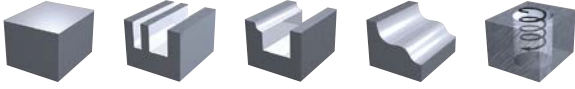
MMC Hitachi Tool Engineering Europe GmbH
www.high-speed-cutting.com



Indexable Milling Tools

ASRM | Turbo Modular

Q max High Efficient	▽ Roughing	HRC 50	No. of Teeth 2	No. of Teeth 3	No. of Teeth 4
--------------------------------	----------------------	------------------	--------------------------	--------------------------	--------------------------



Tolerance Dia.:	Torque on screw:
0/-0.2mm	2.9 Nm


ID Code	Item Code	Z	D	H	d ₁	d ₂	A	B	C	E	M	Inserts
FH494	ASRM0020-2	2	20	30	10.5	18	6	19	10	15	M10	EPNW-0803TN-10
FH495	ASRM0025-2		25	35	12.5	21	7	22		17	M12	
FH496	ASRM0032-3	3	32	40	17	29	7	23	12	22	M16	EDNW-10T3TN-10
FH497	ASRM0040-4	4	40									

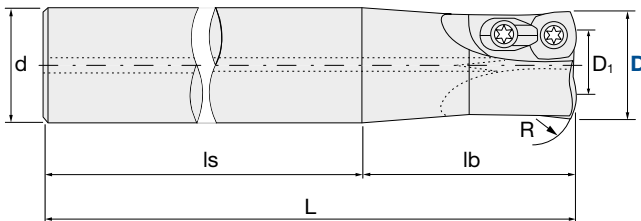
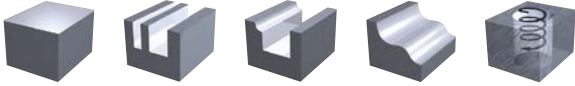


Parts	Clamp Screw		Clamp Piece Set		Wrench	
Body	ID-Code	Item-Code	ID-Code	Item-Code	ID-Code	Item-Code
ASRM-0020-2	ET32	242-141	-	-	ET12	104-T15
ASRM-0025-2	ET38	412-141	ET163	CM3,5-141		
ASRM-0032-3						
ASRM-0040-4						

Indexable Milling Tools

ASR-S | Turbo - Maximum Volume End Mill - Shank Type - Regular




Q max High Efficient	Jet Air Hole	 Roughing	HRC 50	No. of Teeth 2	No. of Teeth 3	No. of Teeth 4
--------------------------------	------------------------	---	------------------	--------------------------	--------------------------	--------------------------



Tolerance Dia.:	Torque on screw:
0/-0.2mm	2.9 Nm

ID Code	Item Code	Z	D	D ₁	L	d	R	lb	ls	Inserts
FH414	ASRS-0020	2	20	8.8	130	20	10	50	80	EPNW0803TN-10
FH415	ASRS-0025		25	13.8	140	25		60		EDNW10T3TN-10
FH416	ASRS-4032		32	16.6	150	32	15	70		EDNW13T4TN-()

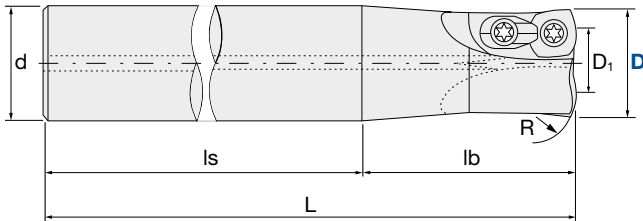
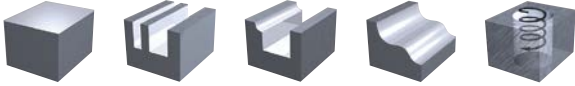


Parts	Clamp Screw		Clamp Piece Set		Wrench	
						
Body	ID-Code	Item-Code	ID-Code	Item-Code	ID-Code	Item-Code
ASRS-0020	ET32	242-141	-	-	ET12	104-T15
ASRS-0025	ET38	412-141	ET163	CM3,5-141		
ASRS-4032	ET162	555-141	ET164	CM5-147	ET14	105-T20

Indexable Milling Tools

ASR-L | Turbo - Maximum Volume End Mill - Shank Type - Long

Q max High Efficient	Jet Air Hole	▽ Roughing	HRC 50	No. of Teeth 2
--------------------------------	------------------------	----------------------	------------------	--------------------------



Tolerance Dia.:	Torque on screw:
0/-0.2mm	2.9 Nm

ID Code	Item Code	Z	D	D ₁	L	d	R	lb	ls	Inserts
FH419	ASRL-0020	2	20	8.8	180	20	10	100	80	EPNW0803TN-10
FH420	ASRL-0025		25	13.8	200	25		120		EDNW10T3TN-10
FH421	ASRL-4032		32	16.6		32	15	EDNW13T4TN-()		

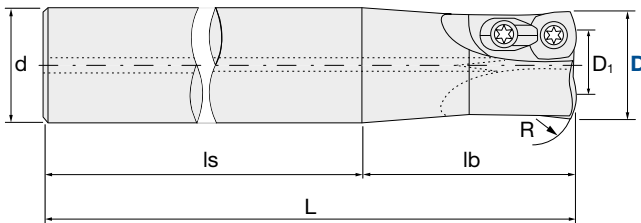
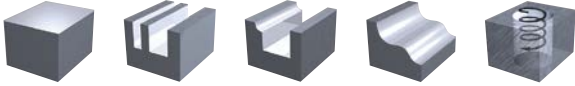


Parts	Clamp Screw		Clamp Piece Set		Wrench	
Body	ID-Code	Item-Code	ID-Code	Item-Code	ID-Code	Item-Code
ASRL-0020	ET32	242-141	-	-	ET12	104-T15
ASRL-0025	ET38	412-141	ET163	CM3,5-141		
ASRL-4032	ET162	555-141	ET164	CM5-147	ET14	105-T20

Indexable Milling Tools

ASR-E | Turbo - Maximum Volume End Mill - Shank Type - Extra Long




Q max High Efficient	Jet Air Hole	 Roughing	HRC 50	No. of Teeth 2
--------------------------------	------------------------	---	------------------	--------------------------



Tolerance Dia.:	Torque on screw:
0/-0.2mm	2.9 Nm


ID Code	Item Code	Z	D	D ₁	L	d	R	lb	ls	Inserts
FH422	ASRE-0020	2	20	8.8	250	20	10	130	120	EPNW0803TN-10
FH423	ASRE-0025		25	13.8	300	25		180		EDNW10T3TN-10
FH424	ASRE-4032		32	16.6		32	15	EDNW13T4TN-()		

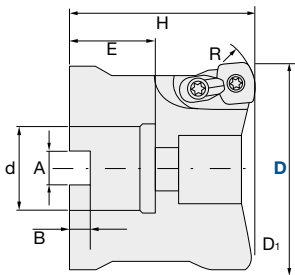
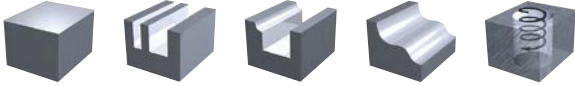


Parts	Clamp Screw		Clamp Piece Set		Wrench	
						
Body	ID-Code	Item-Code	ID-Code	Item-Code	ID-Code	Item-Code
ASRE-0020	ET32	242-141	-	-	ET12	104-T15
ASRE-0025	ET38	412-141	ET163	CM3,5-141		
ASRE-4032	ET162	555-141	ET164	CM5-147	ET14	105-T20

Indexable Milling Tools

ASR-0000-0 | Turbo - Maximum Volume End Mill - Bore Type




Q max High Efficient	 Roughing	HRC 50	No. of Teeth 4	No. of Teeth 5	No. of Teeth 6
--------------------------------	---	------------------	--------------------------	--------------------------	--------------------------



Tolerance Dia.:	Torque on screw:
0/-0.2mm	2.9 Nm

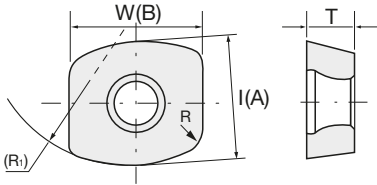
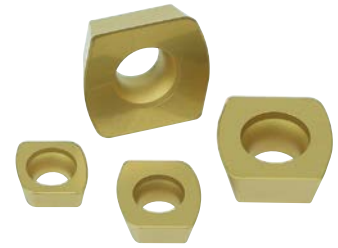
ID Code	Item Code	Z	D	D ₁	H	E	R	A	B	d	Item Code
FH433	ASR-4050M-4	4	50	34.6	50	20	15	10.4	6.3	22	EDNW13T4TN-()
FH437	ASR-0050M-5	5		38.8			10				EDNW10T3TN-10
FH434	ASR-5063M-4	4	63	47.6			15				EDNW15T4TN-()
FH438	ASR-0063M-6	6		51.8			10				EDNW10T3TN-10
FH435	ASR-5080M-5	5	80	64.6	70	22	12.4	7	27	EDNW15T4TN-()	
FH436	ASR-5100M-6	6	100	84.6		25	14.4	8	32	EDNW15T4TN-()	



Parts	Clamp Screw		Clamp Piece Set		Wrench	
						
Body	ID-Code	Item-Code	ID-Code	Item-Code	ID-Code	Item-Code
ASR-4050M-4	ET162	555-141	ET164	CM5-147	ET14	105-T20
ASR-0050M-5	ET038	412-141	ET163	CM3,5-141	ET12	104-T15
ASR-5063M-4	ET162	555-141	ET164	CM5-147	ET14	105-T20
ASR-0063M-6	ET038	412-141	ET163	CM3,5-141	ET12	104-T15
ASR-5080M-5	ET162	555-141	ET164	CM5-147	ET14	105-T20
ASR-5100M-6	ET162	555-141	ET164	CM5-147	ET14	105-T20

Indexable Milling Tools

INSERTS | Turbo - Maximum Volume End Mill



ID Code	Item Code	Grade	R	R ₁	I(A)	T	W(B)
WF569	EPNW-0803TN-10	CY250	3	10	8.1	3.18	7.94
WF572	EDNW-10T3TN-10	CY250			10	3.97	10
WF627	EDNW-13T4TN-10	TB6045		15	13.5	5.56	12.7
WF576	EDNW-13T4TN-15	CY250					
WF629	EDNW-15T4TN-10	TB6045		10	15	15	14
WF578	EDNW-15T4TN-15	CY250		15			

Programming Radius



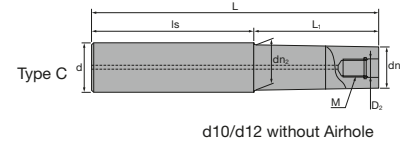
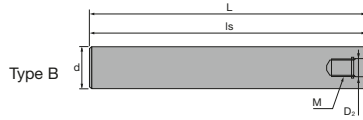
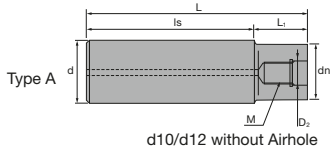
NEW SHAPE AND NEW COATED INSERTS FOR INTERRUPT CUTTING							
ID Code	Item Code	Grade	R	R ₁	I(A)	T	W(B)
WF628	EDNW-13T4TN-15Z	TB6045	3	15	13.5	5.56	12.7
WF630	EDNW-15T4TN-15Z	TB6045			15		14

Programming Radius

TB6045	PVD Hybrid Coating
CY250	C-Coated (Cermet)

Indexable Milling Tools

ASC | Carbide Shanks for Modular Mills



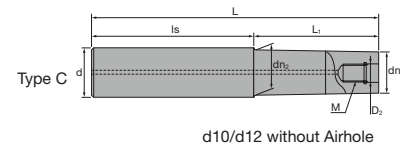
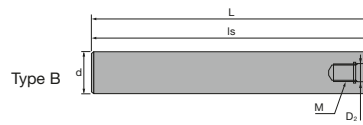
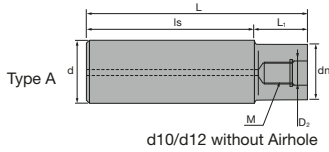
Carbide Shank															
	ID Code	Item Code	D ₂	M	L	L ₁	L _s	dn	dn ₂	d	Type				
Without Airhole	FH137	ASC10-6.5-74-24	6.5	M6	74	24	50	9.3	-	10	A				
	FH254	ASC10-6.5-84-34			84	34									
	FH255	ASC10-6.5-114-24			114	24						90			
	FH138	ASC10-6.5-114-49			114	49	65								
	FH139	ASC12-6.5-74-24			74	24	50					11	11.5	12	C
	FH256	ASC12-6.5-94-44			94	44									
	FH257	ASC12-6.5-129-24			129	24									
	FH140	ASC12-6.5-129-64			129	64	65								
With Airhole	FH141	ASC16-8.5-95-30	8.5	M8	95	30	65	14.5	15.5	16	C				
	FH258	ASC16-8.5-120-55			120	55									
	FH142	ASC16-8.5-140-75			140	75									
	FH260	ASC16-8.5-160-30			160	30									
	FH259	ASC16-8.5-160-95			160	95						65			
	FH143	ASC20-10.5-120-50	10.5	M10	120	50	70	18	-	20	A				
	FH261	ASC20-10.5-170-90Z			170	90	80	18.5	19.5		C				
	FH144	ASC20-10.5-220-50			220	50	170	18	-		A				
	FH262	ASC20-10.5-220-120Z			220	120	100	18.5	19.5		20	C			
	FH263	ASC20-10.5-270-150Z			270	150	120								
	FH264	ASC20-10.5-270-50Z	270	50	220										
	FH145	ASC25-12.5-145-65	12.5	M12	145	65	80	23	-	25	A				
	FH146	ASC25-12.5-265-65			265		200								
	FH265	ASC25-12.5-215-115			215	115	100								
	FH266	ASC25-12.5-265-145			265	145	120								
	FH268	ASC25-12.5-315-65			315	65	250								
	FH267	ASC25-12.5-315-195			315	195	120								
	FH147	ASC32-17-160-80			17	M16	160					80	80	28	-
	FH269	ASC32-17-260-140	260	140			120								
	FH148	ASC32-17-310-80	310	80			230								
FH270	ASC32-17-360-240	360	240	120											

- SUPER Lock milling chucks or shrink-fit holders can be used.
- SUPER Lock Aufnahmen oder Schrumpffutter können verwendet werden.
- Possono essere utilizzati mandrini a forte serraggio SUPER Lock.

- Aptos para amarrar en portapinzas SUPER Lock.
- Les attachements SUPER Lock peuvent être utilisés.
- Cones hidráulicos de grande aperto e aperto térmico podem ser usados.

Indexable Milling Tools

AS | Steel Shanks for Modular Mills



		Steel Shank										
		ID Code	Item Code	D ₂	M	L	L ₁	L _s	dn	dn ₂	d	Type
Without Airhole	FH131	AS10-6.5-74-0		6.5	M6	74	–	74	–	–	10	B
	FH132	AS12-6.5-84-4				84	4	80	11	–	12	A
With Airhole	FH133	AS16-8.5-95-15		8.5	M8	95	15	80	14.5	15.5	16	C
	FH134	AS20-10.5-100-20		10.5	M10	100	20		18	–	20	A
	FH271	AS25-12.5-115-35		12.5	M12	115	35		23	23	25	
	FH272	AS32-17-110-30		17	M16	110	30		28	28	32	

SUPER Lock milling chucks can be used.

SUPER Lock Aufnahmen können verwendet werden.

Possono essere utilizzati mandrini a forte serraggio SUPER Lock.

Aptos para amarrar en portapinzas SUPER Lock.

Les attachements SUPER Lock peuvent être utilisés.

Cones hidráulicos de grande aperto e aperto térmico podem ser usados.

For further information about modular chucks please see our brochure *Indexable Modular Series No. 328.2*

Weitere Informationen über modulare Werkzeugaufnahmen finden Sie in unserem Prospekt: *Indexable Modular Series No. 328.2*

Para obtener más información sobre conos modulares consulte nuestro folleto *Indexable Modular Series No. 328.2*

Per maggiori informazioni riguardanti la gamma dei mandrini avvitalibili consultate il catalogo *Indexable Modular Series No. 328.2*

Pour de plus amples informations concernant les attachements modulaires, voyez SVP notre brochure *Indexable Modular Series No. 328.2*

Para mais informações sobre Cones Modulares consulte o nosso folheto *Indexable Modular Series No. 328.2*



Always up to date: Please check our P50 QuickFinder



www.mmc-hitachitool-eu.com/quickfinder

Product Range

Solid Carbide End Mills



Indexable Milling Tools



WHNSB Drills



Milling Chucks



Distributed by:



MMC Hitachi Tool Engineering Europe GmbH

Itterpark 12 · 40724 Hilden · Germany · Phone +49 (0) 21 03-24 82-0 · Fax +49 (0) 21 03-24 82-30
 E-Mail info@mmc-hitachitool-eu.com · Internet www.mmc-hitachitool-eu.com
 © 2015 by MMC Hitachi Tool Engineering Europe GmbH · 2nd Edition · Printed in Germany