

Advanced Engineering

**Indexable
Milling**

MMC Hitachi Tool

No. 338

SS4P *Easy Cut 4 Corners Shoulder Mill*
*From General Steels to
Difficult Materials · D 25 - 40*

Available Grades:

JP4120

GX2140



MMC Hitachi Tool Engineering Europe GmbH
www.high-speed-cutting.com



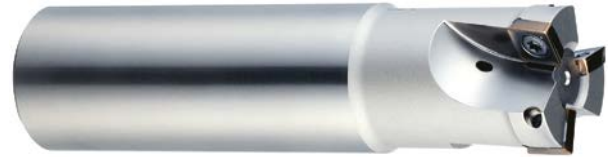
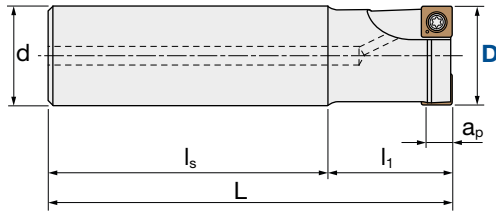
Indexable Milling Tools

SS4P | Easy Cut 4 Corners Shoulder Mill SS4P

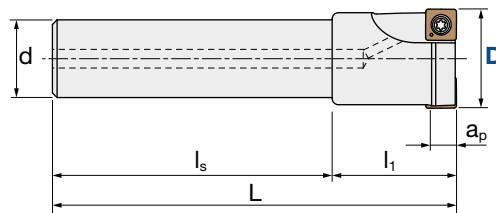
V max High Speed	▽ Roughing	▽▽ Semi Finishing	HRC 40	No. of Teeth 2-4
----------------------------	----------------------	-----------------------------	------------------	----------------------------



A - Standard Type



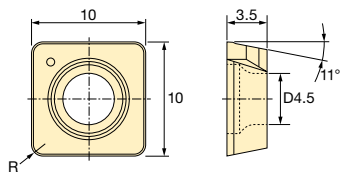
B - Undercut Type



Diameter Tolerance	Torque on Screw
-0.1 ~ -0.2 mm	2.9 Nm

ID Code	Item Code	Flutes	D	a _p	l ₁	l _s	L	d	Shape	Shank	Coolant Hole	Inserts
FH600	SS4P3025S25-2	2	25	8	35	85	120	25	A	Steel	•	SPMT10030...R-FW SPMT100308R-TFW
FH601	SS4P3032S32-3	3	32		45		130	32	B			
FH602	SS4P3040S32-4	4	40									

INSERTS SS4P | Easy Cut 4 Corners Shoulder Mill SS4P



Cross sections of cutting edges:

Fig.1: FW Type
General Purpose

Fig.2: TFW Type
Hardened surface milling;
Heavy interrupt milling

Inserts	Tolerance Class	Grade		Size (mm)			Cross Section Shape
		GX2140	JP4120	R	T	Inscribed Circle	
Item code		ID-Code					
SPMT100304R-FW	M	WF775	WF772	0.4	3.5	10	Fig.1
SPMT100308R-FW		WF776	WF773	0.8			Fig.2
SPMT100308R-TFW		WF777	WF774				

GX2140

CVD - For heavy roughing of mild steels | Recommended for dry cutting

CVD - für große Schruppvolumina in Bau- sowie Vergütungsstählen
Trockenbearbeitung ist zu empfehlen.

CVD - Sgrossatura pesante di acciaio da costruzione | Raccomandato per taglio a secco

CVD - Grosse ébauche pour acier doux | Recommandé en usinage à sec

CVD - Para grandes desbastes de aceros blandos | Recomendado para el mecanizado en seco

CVD - Para desbaste pesado de aço macio | Recomendado para corte a seco

JP4120

PVD - Grade for pre-hardened steels or hardened steels | Employs a fine carbide substrate with an excellent balance between wear resistance and toughness and the new „AJ Coating“ to provide wear resistance and chipping resistance. Highly versatile with excellent wear resistance and chipping resistance when machining steel materials.

PVD - für vorgehärtete und gehärtete Stähle | Verbindet feinkörniges Hartmetall-Substrat mit der hervorragenden Balance zwischen Verschleißfestigkeit und Härte der neuen „AJ Beschichtung“. Vielseitige Beschichtung mit höchster Verschleißfestigkeit und Beständigkeit gegen Absplinterung für die Bearbeitung von Stählen.

PVD - Grado per acciai bonificati o temprati | Viene utilizzato un substrato in micro grana con un'eccezionale bilanciamento tra resistenza all'usura e tenacità abbinato al nuovo rivestimento „AJ“ resistente ad usura e scheggiatura. Estremamente versatile nella lavorazione di acciaio.

PVD - Nuance pour les aciers pré-traités et les aciers trempés | Combinaison d'un substrat carbure apportant un bon équilibre résistance à l'usure/dureté et le nouveau revêtement „AJ“ apportant une grande résistance à l'usure et à l'écaillage. Très polyvalent, il est adapté aux aciers.

PVD - Calidad PVD para aceros templados o pre-templados | Tiene un sustrato de metal duro fino con una excelente equilibrio entre la resistencia al desgaste y la tenacidad y que junto al nuevo "Recubrimiento AJ" le proporciona una elevada resistencia al desgaste y a la micro-rotura. Altamente versátil, con excelente resistencia al desgaste y a la micro-rotura en el mecanizado de aceros.

PVD - Grau para aços pré-tratados ou temperados | Utiliza uma fina camada de substrato de carboneto com um equilíbrio excelente entre resistência ao desgaste e robustez e aplica o novo revestimento „AJ“ que proporciona resistência ao desgaste e facilita a remoção de aparas. Altamente versátil com excelente resistência ao desgaste e facilidade de remoção de aparas na maquinação de aço com durezas de 30 a 50 HRC.

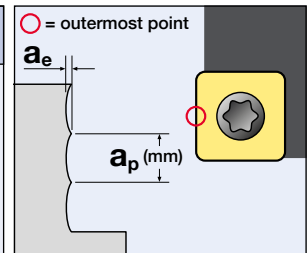
SS4P | Recommended Cutting Conditions



INSERTS | Improved cutting surface | Fine Wall Type **SPMT...R-FW**

🇩🇪 Querschnitt der Schneidkanten: 🇮🇹 Sezione trasversale del filo tagliente: 🇫🇷 Coupes transversales des dents: 🇪🇸 Las secciones transversales de los filos de corte: 🇵🇹 Diagrama de secção da aresta de corte:

Fig.1: FW Type
🇩🇪 Universal 🇮🇹 Impiego generico 🇫🇷 Usage général 🇪🇸 Uso general 🇵🇹 Uso Geral

Fig.2: TFW Type
🇩🇪 Für geschmiedete Oberflächen; stark intermittierende Bearbeitungen 🇮🇹 Superfici forgiate; Forte taglio interrotto 🇫🇷 Surface forgée; Usinage aux chocs élevé 🇪🇸 Capas superficial de la forja; Fuerte corte interrumpido 🇵🇹 Corte de superficies forjadas; Forte corte intermitente



Parts	Clamp Screw			Wrench	
Shape					
	ID-Code	Item-Code	Torque	ID-Code	Item-Code
	ET038	412-141	2.9 Nm	ET012	104-T15

Always up to date: Please check our P50 QuickFinder



Product Range

Solid Carbide End Mills



Indexable Milling Tools



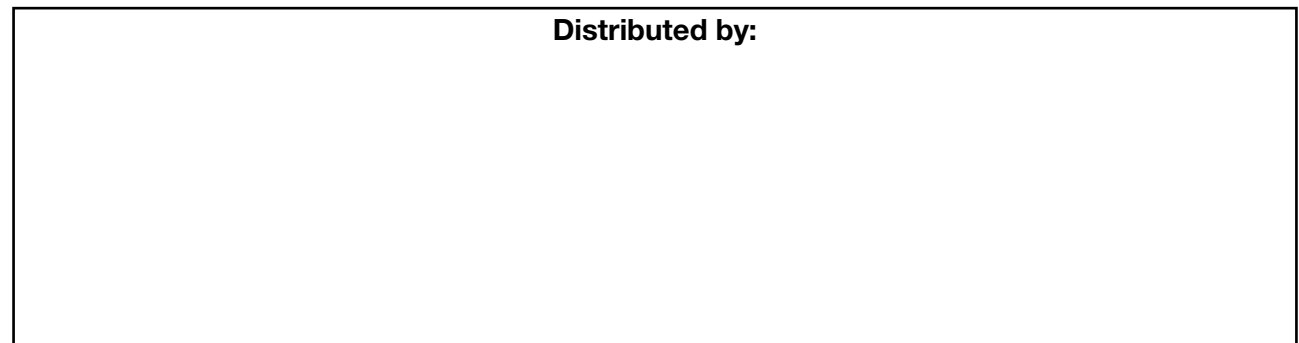
WHNSB Drills



Milling Chucks



Distributed by:



MMC Hitachi Tool Engineering Europe GmbH

Itterpark 12 · 40724 Hilden · Germany · Phone +49 (0) 21 03-24 82-0 · Fax +49 (0) 21 03-24 82-30
 E-Mail info@mmc-hitachitool-eu.com · Internet www.mmc-hitachitool-eu.com
 © 2016 by MMC Hitachi Tool Engineering Europe GmbH · Printed in Germany